

# \$583,000

# House & Land Rosedale



## The Brighton 254



4



2



2.5



2

Lot 168 Obrist Place,  
Rosedale Sth

### MODE INCLUSIONS

Land Price : \$322,500

- ✓ Land
- ✓ Site Cost Allowance

House Price: \$260,500

- ✓ Prestige Inclusions
- ✓ Floor Coverings

Land Size : 422 m<sup>2</sup>

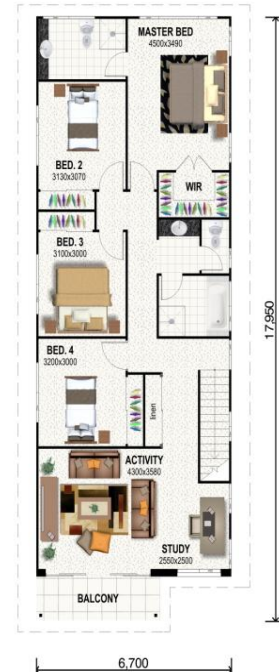
- ✓ Driveway and Path to Entry
- ✓ 6 Star Compliant

House Size : 254 m<sup>2</sup>

- ✓ Alfresco Living

Incl Alfresco: 15.6 m<sup>2</sup>

- ✓ See your Nuvo Homes Sales Consultant for full details of package inclusions



THE BRIGHTON 254	
AREAS	SQ. METRES
LOWER LIVING	76.0
UPPER LIVING	116.6
GARAGE	35.9
PATIO	15.6
PORCH	4.7
BALCONY	5.5
<b>TOTAL</b>	<b>254.3</b>

For more information please contact Jason Munro :0423 143 602

[www.nuvohomes.com.au](http://www.nuvohomes.com.au)

\* Prices effective 01.07.2011. Nuvo Homes reserves the right to change prices without notice. Prices based on a standard home and facade and Nuvo Homes preferred siting. Facade image shown is not standard and is not included in total package price. If selected, this facade may incur additional costs. Carpet and tiled flooring is based on builders standard range. Unless otherwise advertised, the price may be subject to exclusions such as landscaping, fencing and any other exclusions nominated by the builder. For a full list of House and Land inclusions please see your Nuvo Homes sales consultant. Nuvo Homes fixed price house and land packages require developers design review panel final approval. The price does not include additional legal fees relating to the building and/or land contract, stamp duty and registration fees which includes transfer, change of ownership fees or any other relevant charges to the acquisition of land. Land price and availability are subject to change without notice.

